

GBC Session Bias 101

EMEA Regional AGM

October 13, 2019



#BLACKLIVESMATTER



DEMOCRATS ABROAD

Take the Quiz

[https://forms.gle/FwvRaD946nU
cXd6a6](https://forms.gle/FwvRaD946nUcXd6a6)



Q1 - Education

Four years after earning a bachelor's degree, on average, how much more student loan debt do black graduates owe compared to their white peers?

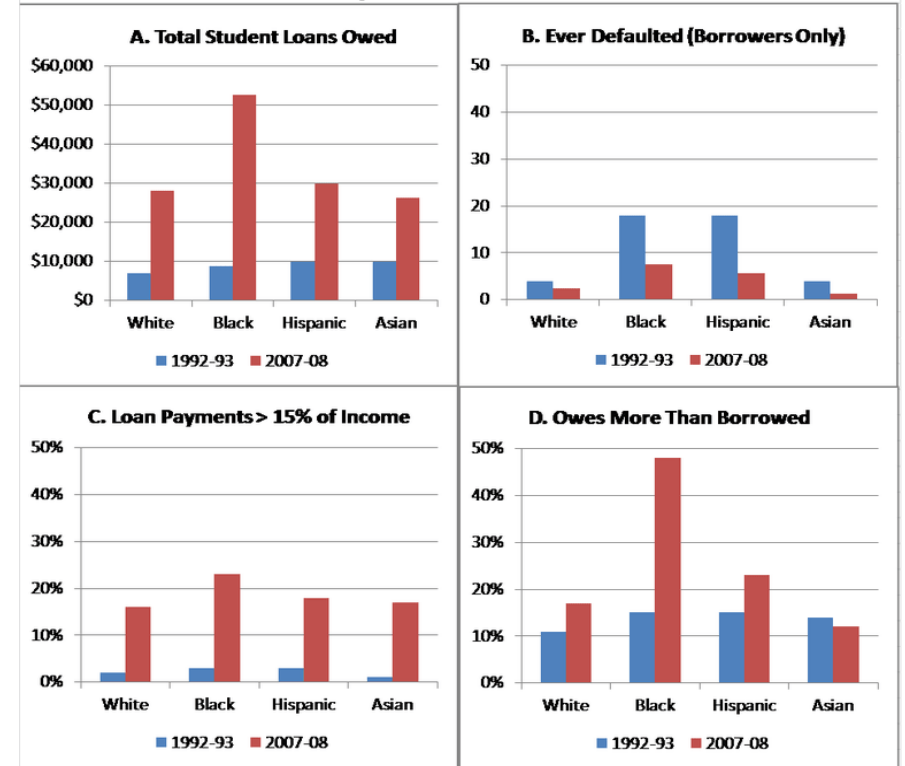
- A. \$2,300
- B. \$5,200
- C. \$7,400
- D. \$9,900



Q1 Answer

- \$7,400
- According to the College Board, the average cumulative student debt balance in 2017 was \$26,900 for graduates of public four-year schools and \$32,600 for graduates of private nonprofit four-year schools.
- At For-Profit Colleges, the average student loan debt is \$39,950, which is 26% higher today than it was in 2008.

Figure 1. Racial Disparities in Student Loan Debt Four Years After Graduation, By Graduation Cohort



Source: Authors' calculations using restricted B&B:93/97 and 08/12 data, using survey weights and restricting samples to U.S. citizens. Due to small sample size, we exclude self-reported American Indian/Alaskan Native, Native Hawaiian/Pacific Islander, multi-race, and unreported race from this analysis. All amounts expressed in 2012 dollars. Average amounts and percentages include zeros for non-borrowers except in Panel B. To enable the most consistent comparisons cross-cohort, Panel D examines growth in federal undergraduate loan debt only.

Q2- Voting Rights

How many states enacted laws restricting access to voting between 2010 and 2018?

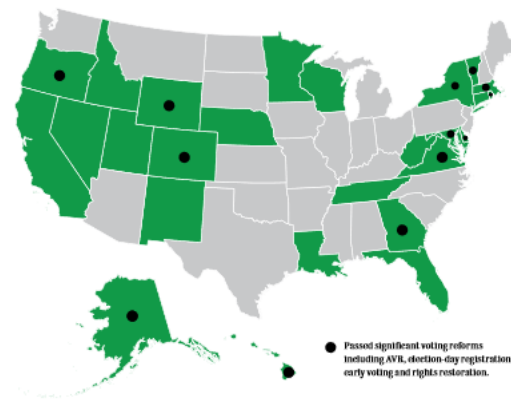
- A. 23
- B. 35
- C. 25
- D. 18



Q2 Answer

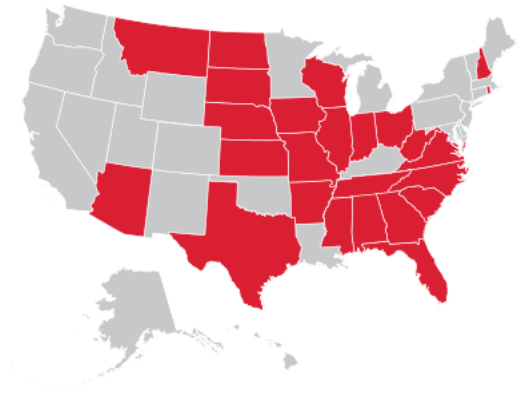
- Over the past decade, states enacted a wave of laws restricting access to voting. During the 2018 elections, voters in 23 states—nearly half the country—faced tougher restrictions than they did in 2010, with additional restrictions passed since then.

Major Expansions to Voting Access
(2013–June 2018)



While many states have moved to restrict their citizens' access to the ballot in the past decade, others have expanded access to their voting process.

Restrictive Voting Laws
(2011–2018)



Over the past decade, states enacted a wave of laws restricting access to voting. During the 2018 elections, voters in 23 states—nearly half the country—faced tougher restrictions than they did in 2010, with additional restrictions passed since then.



Q3 – Police Brutality

At the time that Mike Brown was killed in Ferguson, MO, Police in Ferguson arrested black people at a rate nearly three times higher than people of other races. How many other police departments across the USA arrest black people at higher rates?

- A. 5,973
- B. 1,581
- C. 987
- D. 2,459

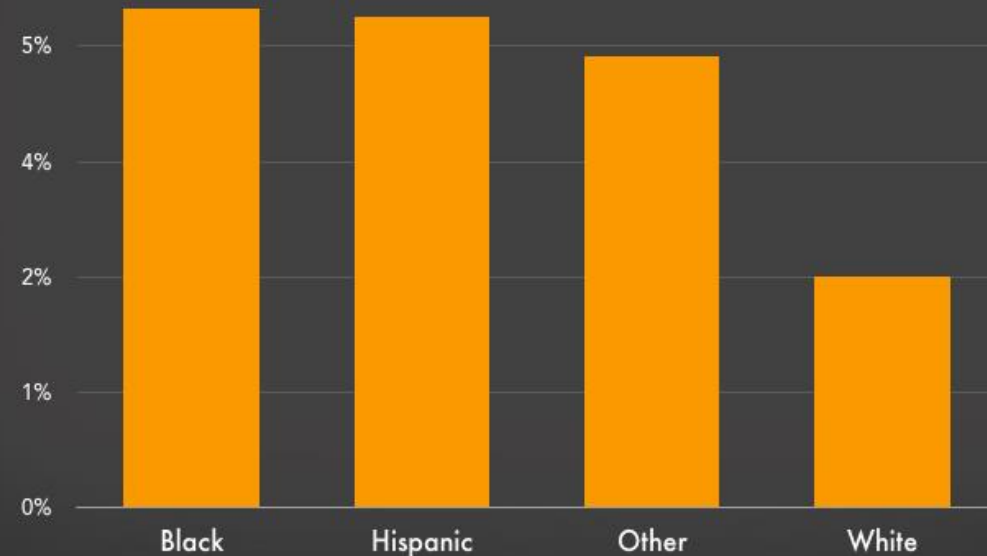
Q3 Answer

- At least 1,581 other police departments across the USA arrest black people at rates even more skewed than in Ferguson, a USA TODAY analysis of arrest records shows.
- That includes departments in cities as large and diverse as Chicago and San Francisco and in the suburbs that encircle St. Louis, New York and Detroit.

Police are twice as likely to use force against people of color

Percentage of respondents, by race, who reported that (a) their most recent police contact in 2015 was initiated by police and (b) police threatened or used force against them during that interaction

People who experienced the threat or use of force when they were most recently approached by police



PRISON
POLICY INITIATIVE

Data Source: Bureau of Justice Statistics "Contacts Between Police and the Public, 2015" Table 18



STAND WITH FRONTLINE COMMUNITIES IN OUR FIGHT FOR ENVIRONMENTAL JUSTICE, AGAINST THE RAVAGES OF TOXIC CHEMICALS AND CLIMATE CHANGE.

What percent of country's contaminated waste sites are located near low-income housing?

- A. 0%
- B. 15%
- C. 50%
- D. 70%

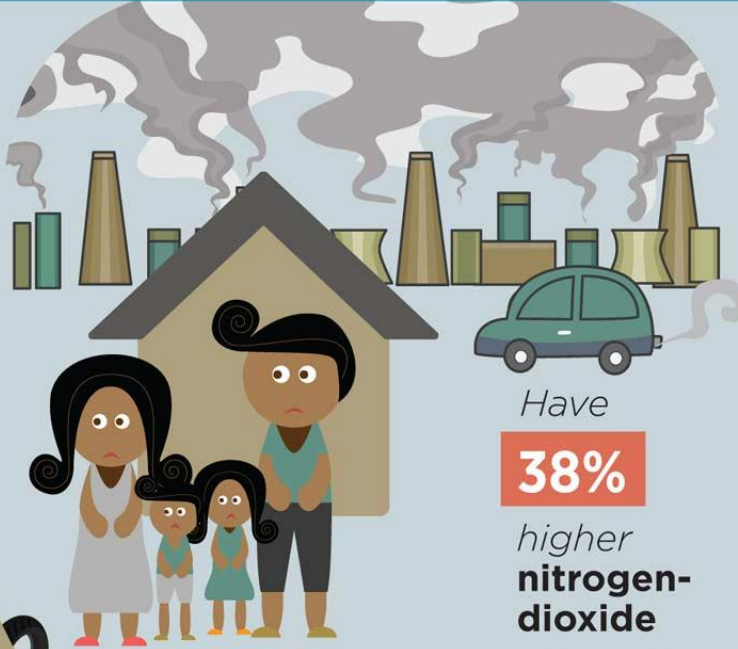
Q4 – Environmental Racism

Environmental Racism Is Nothing New

Race is the most significant predictor of a person living near contaminated air, water, or soil.

56%

of the population near **toxic waste** sites are people of color.



People of color:

38%

Have higher **nitrogen-dioxide** exposure.

Are

2x

more likely to live without **potable water** and **modern sanitation**.

Have seen

95%

of their claims against polluters **denied by the EPA**.

THE NATION
150
INVESTIGATING PROGRESS SINCE 1865

- An estimated 70% of the country's contaminated waste sites are located near low-income housing, and an Associated Press analysis suggests 2 million people live within a mile of one of the 327 Superfund sites vulnerable to climate change-related flooding, most of them in low-income communities and communities of color.
- The south-east, particularly North Carolina and Virginia, is notorious for its coal ash deposits, spills, and anti-regulation mentality.
- People of color have outsized exposure to coal ash pollution, which contains carcinogens like mercury, lead, and arsenic.
- The EPA estimates that 1.5 million people of color live in areas vulnerable to contamination.

Q4 Answer



Q5 – Implicit Bias

Is implicit bias a problem for everyone?

- A. Yes, it is.
- B. No, I think those people are okay.
- C. Maybe.
- D. What is implicit bias?



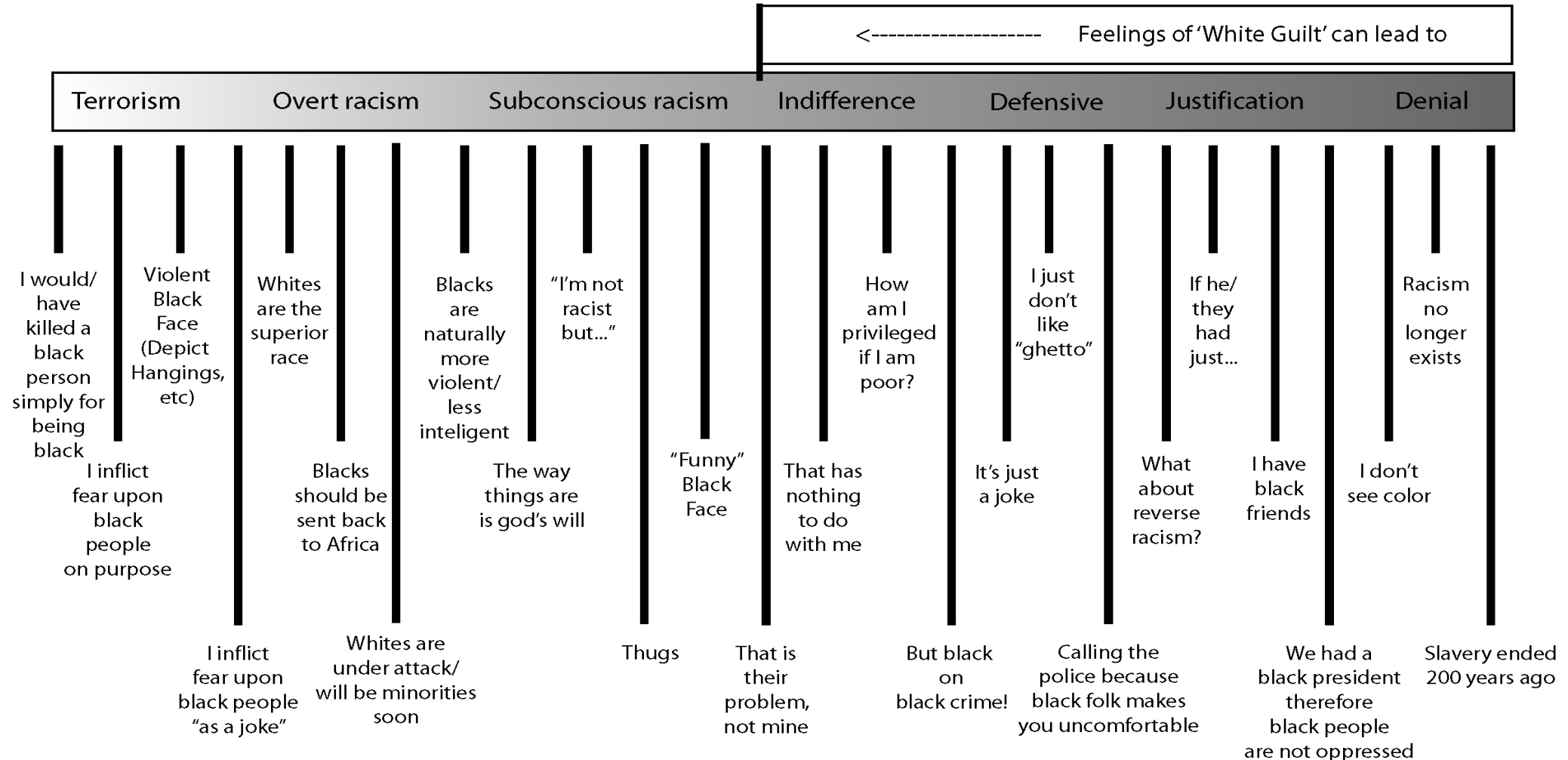
- An implicit bias is an unconscious association, belief, or attitude toward any social group.
- Due to implicit biases, people may often attribute certain qualities or characteristics to all members of a group, a phenomenon known as stereotyping.
- Many of our laws are based on biased views.
- Have you ever thought about the origin of your biases?

Q5 the Answer is YES

Where Can We Start?

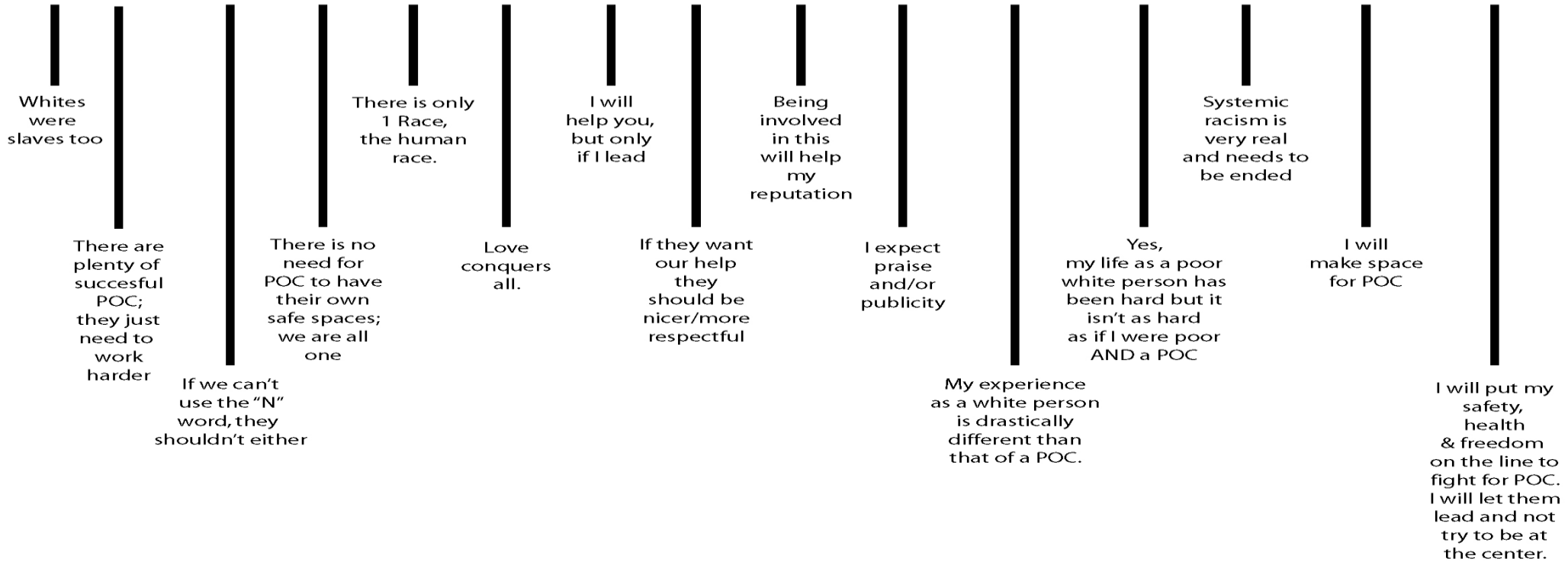
- Take Harvard's implicit bias test:
<https://implicit.harvard.edu/implicit/takeatest.html>
 - Have you heard racist talk in closed groups?
 - Do you feel uncomfortable when you don't know something about racism, minority cultures, attitudes, or actions?
-
- We are learning how biased the system is against most people.
 - Do you have empathy for other people?
 - Do you assume people that look like you are like you?
 - Do you assume people who look different from you have nothing in common with you?

Racism Scale: Where do you fall?



Racism Scale: Where do you fall?

and compound many of these behaviors ----->



***Note: It is common for many people to move back & forth along the scale regularly, especially the middle parts**
**** The term "blacks" is used to be more familiar to anyone of those mentalities**
*****"Blacks" can be substituted with people of any nationality/ethnicity other than European white since it's people of European descent who have held institutional power in America since its inception.**



How Do We Achieve Universal Equality

- America will never have progress and equality if institutional racism exists.
- Don't get stuck. Confront your own feelings and biases. Understand them and those of others.
- Feel free to discuss your biases with others to resolve them.
- What policies are Democratic candidates putting forward?
- Do the policies contain bias?
- The laws must be in place to prevent/combat racism and bias.
- Fighting racism is a collective responsibility.

Where To Find Us Online

Email: blackcaucus@democratsabroad.org

Website: democratsabroad.org/bc

Facebook.com/DemsabroadGBC/

Twitter: @DemsAbroadGBC

Instagram: demsabroadgbc

YouTube: <https://bit.ly/2mKT9A4>

GBC Power to the People Podcast is available on iTunes and Podomatic

DA Wiki:

<https://wiki.democratsabroad.org/display/BlackC/Black+Caucus+Wiki+Home>

